



Advertising Company, Inc.

1022 Morrissey Boulevard, Boston, MA 02122 Tell: (617)28-2100 Fax: (617)282-2040

MA# 1 - I-93 @ Neponset Circle, (F/N) - Boston, MA



description

Outstanding right-hand display located in the heart of I-93 out of Downtown Boston. Targets traffic heading south on I-93 toward the affluent "South Shore" suburbs, and all Cape Cod and Islands. Traffic on I-93 is originating from all Downtown areas: The Financial District, The North End, Boston Waterfront, and The Boston Expo Center.

DEC: 165,000 (140,000 from I-93 south, and 25,000 from Morrissey Blvd, and traffic towards the Route 3A Bridge)

details

Unit Name: Route I-93 @ Neponset Circle, Boston, MA
Size: 10x30 feet
WEEKLY GROSS IMPRESSIONS: (18+) 687,883
Facing: North
Latitude: 42.286007
Longitude: --71.043529



Advertising Company, Inc

1022 Morrissey Boulevard, Boston, MA 02122 Tell: (617)28-2100 Fax: (617)282-2040

MA# 2- I-93 @ Neponset Circle, (F/S) Boston, MA



description

Outstanding display located in the heart of I-93 into Downtown Boston. Targets traffic originating affluent "South Shore" suburbs, and all Cape Cod and Islands traffic. Travelers on I-93 are destined for the Financial District, the North End, Logan International Airport, and I-90(Mass. Pike) both east and west. A short distance "from the landmarks of Downtown", Boston Waterfront, Faneuil Hall, Cop Square and The Boston Expo Center. Traffic at virtual dead stop directly in front of this unit.

DEC 165,000 (140,000 from I-93 north, and additional 25,000 from Morrissey Blvd and traffic towards the Route 3A Bridge)

details

Unit Name: Routel-93 @ Neponset Circle, Boston MA

Size: 10x30 feet

WEEKLY GROSS IMPRESSIONS: (18+) 508,870

Facing: South

Latitude: 42.286007

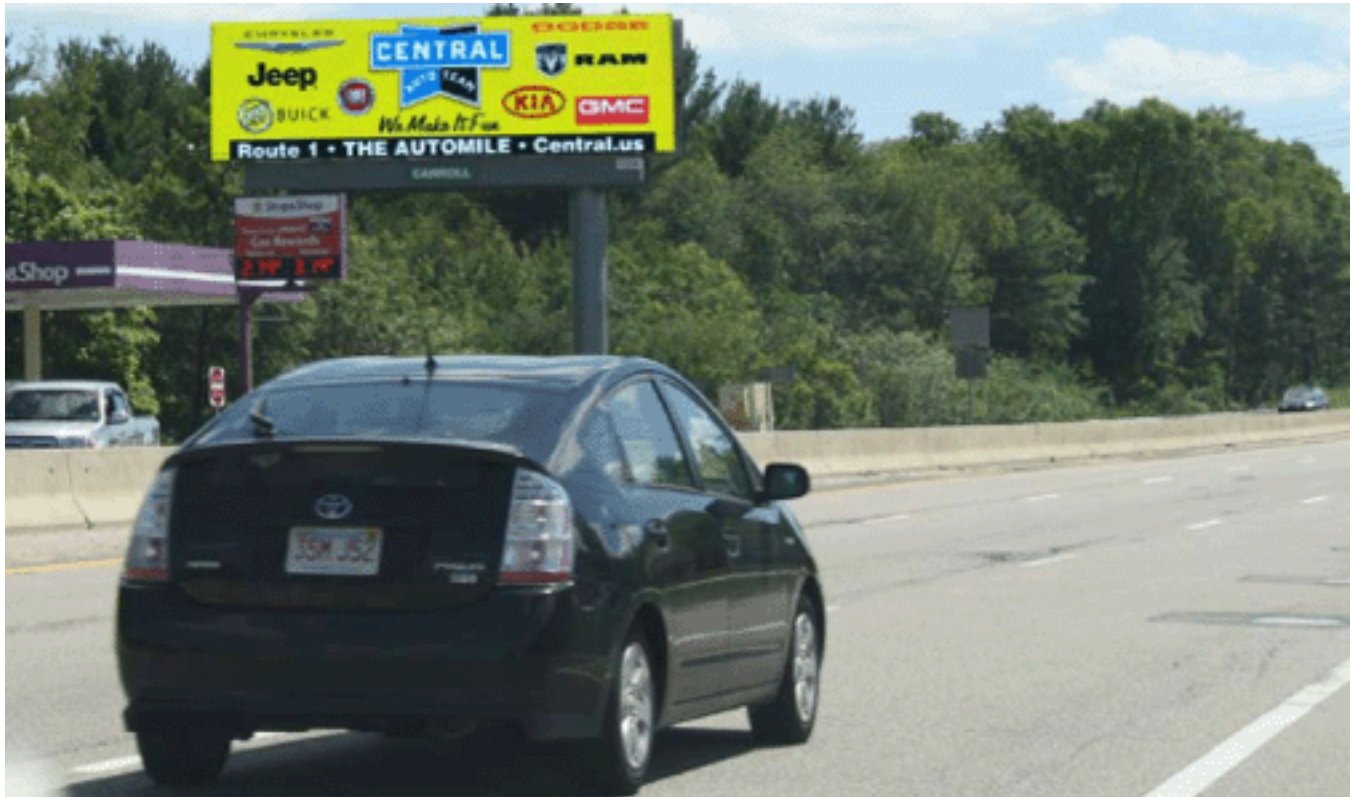
Longitude: -71.043529



Advertising Company, Inc.

1022 Morrissey Boulevard, Boston, MA 02122 Tell: (617)282-2100 Fax: 617-282-2040

MA#3 - Route 1 @ Route 27 Junction (F/N) 14x48 Premier Digital Sharon/Foxboro, MA



description

Extensive left hand read located on Route 1, at the major stoplight/junction of Route 27. One of the busiest 4 way intersections on all of Route 1. Seen by traffic headed south on Route 1, and one mile north of the Route 1 intersection of I-95 north and south on-ramps. 2.5 miles north of Gillette Stadium/Patriot Place-home of the NFL New England Patriots and New England Revolution.

details

Unit Name: Route 1 @ Route 27 Junction (F/N)
 Size: 14'x48' Premier Digital
 Weekly Gross Impressions: (18+) 83,525 per flip - 6 Maximum Advertisers. 10 second display per flip
 Facing: North
 Latitude: 42.138189
 Longitude: -71.219735



Advertising Company, Inc.

1022 Morrissey Boulevard, Boston, MA 02122 Tell: (617)282-2100 Fax: 617-282-2040

MA#4 - Route 1 @ Route 27 Junction (F/S) 14x48 Premier Digital Sharon/Foxboro, MA



description

Sensational, long right hand read located on Route 1 at the major 4-way stoplight junction of Route 27- which is the main route taken to get to one of the more affluent areas (Metro-West Boston), and towns such as Medfield, Dover, Wellesley, and South Natick. Route 27 also connects you into Route 9 in Natick. Approximately one mile north of the Route 1 intersection with I-95 north and south on-ramps. 2.5 miles north of Gillette Stadium/Patriot Place-Home of the NFL New England Patriots.

details

- Unit Name: Route 1 @ Route 27 Junction (F/S)
- Size: 14'x48' Premier Digital
- Weekly Gross Impressions: (18+) 105,300 per flip - 6 Maximum Advertisers. 10 second display per flip
- Facing: South
- Latitude: 42.138189
- Longitude: 71.219735



Advertising Company, Inc.

1022 Morrissey Boulevard, Boston, MA 02122 Tell: (617)282-2100 Fax: 617-282-2040

MA#5 Route 1, 1 Mile S/O I-95 N/S On Ramps (F/N) *Premier Digital-Sharon/Foxboro, MA..



description

Outstanding left hand read/approach, located approximately 1 mile south of the Route 1 Junction and I-95 north and south on-ramps. One and a half miles north of Gillette Stadium/Patriot Place-home of the NFL New England Patriots, and New England Revolution, which is now a year round destination spot with over 50 retail stores and a dozen restaurants , as well as concerts and trade shows.

details

Unit Name: Route 1, 1 Mile S/O I-95 N/S On Ramps (F/N) *Premier Digital-Sharon/Foxboro, MA.
Size: 14'x48'
Weekly Gross Impressions: per flip (18+) 56,769
Facing: North
Latitude: 42.118609
Longitude: -71.234647



Advertising Company, Inc.

1022 Morrissey Boulevard, Boston, MA 02122 Tell: (617)282-2100 Fax: 617-282-2040

MA#6 - Route 1, 1 Mile S/O I-95 N/S ON Ramps (F/S) 14x48 Bulletin Sharon/Foxboro, MA



description

The most extensive, right hand approach and best 14x48 bulletin on Route 1, (approximately 1/3 of a mile long). Board seen heading north on Route 1, approximately 1 mile south of the Route 1 junction and I-95 north and south on-ramps. Connects with traffic heading towards the Norwood Auto Mile, the largest concentration of auto dealers in the state of Massachusetts. 2 miles north of Gillette Stadium/Patriot Place-home of the NFL New England Patriots, and New England Revolution.

details

- Unit Name: Route 1, 1 Mile S/O I-95 N/S On-Ramps, (F/S)
- Size: 14'x48' Bulletin
- Weekly Gross Impressions: (18+) 111,218
- Facing: South
- Illumination: Yes
- Latitude: 42.118609
- Longitude: -71.234647



Advertising Company, Inc.

1022 Morrissey Boulevard, Boston, MA 02122 Tell: (617)282-2100 Fax: 617-282-2040

MA#7 Route 1, 1.25 Miles S/O I-95 N/S On Ramps - (F/N) Sharon/Foxboro, MA.



description

Extensive left hand read- 14x48 static billboard, located approximately 1.5 miles south of the Route 1 Junction with I-95. Seen by south-bound traffic on Route 1, after taking EXIT #9 (Foxboro/Route 1) off of I-95. 2 miles north of Gillette Stadium/Patriot Place-home of the NFL New England Patriots and New England Revolution. 5 miles north of Wrentham Village Premium Outlet, the largest upscale premium mall outlet in the state of Massachusetts.

details

Unit Name: Route 1, 1.25 Miles S/O I-95 N/S On Ramps - Sharon/Foxboro, MA.
Size: 14'x48' Bulletin
Weekly Gross Impressions: (18+) 89,125
Facing: North
Illumination: Yes
Latitude: 42.117139
Longitude: -71.236484



Advertising Company, Inc

1022 Morrissey Boulevard, Boston, MA 02122 Tell: (617)28-2100 Fax: (617)282-2040

MA#8 Route 1 "Auto Mile" (F/N) - Norwood, MA



description

This unique, high impact bulletin is located on Route 1 in Norwood MA, just 2 miles south of I-95 and Route 128, and 3 miles north of Gillette Stadium /Patriots Place (home to the New England Patriots and New England Revolution). This strip of roadway is known as "The Auto Mile", has over 20 automobile dealerships and numerous retail shops surround this prime location. Located directly across from the #1 Toyota and #1 Honda dealer in the country (regularly attracting record numbers of car shoppers).

details

Unit Name:	Route 1 "Auto Mile" Norwood MA
Size:	14 x 48 feet
Weekly Gross Impressions:	(18+) 126,000
Facing:	North
Illumination:	Yes
Latitude:	42.201254
Longitude:	-71.18688



Advertising Company, Inc

1022 Morrissey Boulevard, Boston, MA 02122 Tell: (617)28-2100 Fax: (617)282-2040

MA#9 Route 1 “Auto Mile” (F/S) - Norwood, MA



description

This unique, high impact bulletin is located on Route 1 in Norwood MA, just 2 miles south of I-95 and Route 128, and 3 miles north of Gillette Stadium /Patriots Place (home to the New England Patriots and New England Revolution). This strip of roadway is known as “The Auto Mile”, has over 20 automobile dealerships and numerous retail shops surround this prime location. Located directly across from the #1 Toyota and #1 Honda dealer in the country (regularly attracting record numbers of car shoppers).

details

Unit Name: Route 1 “Auto Mile” Norwood MA
Size: 14 x 48 feet
Weekly Gross Impressions: (18+) 165,442
Facing: South
Illumination: Yes
Latitude: 42.201254
Longitude: -71.18688



Advertising Company, Inc.

1022 Morrissey Boulevard, Boston, MA 02122 Tell: (617)282-2100 Fax: 617-282-2040

MA#10 Route 1; 0.5 miles S/O I-95 N/S On Ramps (F/N) - Sharon, MA.



description

With the I-95 north and south on-ramps one half mile away, this sensational 14x48 bulletin reaches traffic heading south on Route 1. Located at a major 4-way stop light (Route 1 and Old Post Road), and 2 miles north of Gillette Stadium/Patriot Place – home of the NFL New England Patriots, and New England Revolution. 4 miles south of The Norwood Auto Mile, the largest concentration of auto dealerships in the state of Massachusetts. Every major retailer within minutes of this bulletin on Route 1

details

Unit Name: Route 1; 0.5 miles S/O I-95 N/S On –Ramps
 Size: 14'x48'
 Weekly Gross Impressions: (18+) 88,532
 Facing: North
 Illumination: Yes
 Latitude: 42.122092
 Longitude: -71.231604



Advertising Company, Inc.

1022 Morrissey Boulevard, Boston, MA 02122 Tell: (617)288-2100 Fax: (617)282-2040

MA#11 - Route 1 ; 0.5 mile S/O I-95 N/S On Ramps (F/S)- Sharon, MA.



description

Extensive right hand approach, located at major 4-way intersection (Route 1 and Old Post Road) in Sharon, Mass. Seen heading north on Route 1, approximately one-half mile south of the I-95 north and south on-ramps. Two miles north of Gillette Stadium/Patriot Place- Home of the NFL New England Patriots and New England Revolution, and Patriot Place - home of over 50 + retail stores. Located just south of The Auto Mile, the largest concentration of auto dealerships in the state of Massachusetts, and every major retailer in the USA on Route 1.

details

Unit Name: Route 1 ; 0.5 mile S/O I-95 N/S On Ramps (F/S)- Sharon, MA.

Size: 14'x48'

Weekly Gross Impressions: (18+) 111,809

Facing: South

Illumination: Yes

Latitude: 42.122092

Longitude: -71.231604



Advertising Company, Inc.

1022 Morrissey Boulevard, Boston, MA 02122 Tell: (617)288-2100 Fax: (617)282-2040

MA#12 - Rute 1 S/O Gillette Stadium/Patriot Place (F/N) - Foxborough/Wrentham MA



description

This outstanding right hand read is seen by commuters traveling south on Route 1. Located approximately 1 mile from the junction of Route 1 and I-495 (which is a major thoroughfare for Cape Cod and Islands traffic.) It is within 1 mile of major retailers Target and Lowes, and Gillette Stadium/Patriot Place- home of the NFL New England Patriots and New England Revolution. 3 miles from Wrentham Village Premium Outlets, one of the largest destination retail outlets in Massachusetts.

details

Unit Name: Route 1 S/O Gillette Stadium/Patriot Place (F/N) Foxborough/Wrentham, MA
Size: 14'x48'
Weekly Gross Impressions: (18+) 114,084
Facing: North
Illmumination: Yes
Latitude: 42.055613
Longitude: -71.298484



Advertising Company, Inc

1022 Morrissey Boulevard, Boston, MA 02122 Tell: (617)28-2100 Fax: (617)282-2040

MA#13 Route 1 S/O Gillette Stadium/Patriot Place (F/S) - Foxborough/Wrentham, MA



description

This outstanding left hand read is seen by commuters traveling North on Route 1. Located approximately 1 mile from the junction of Route 1 and I-495 (which is a major thoroughfare for Cape Cod and Islands traffic). It is within 1 mile of major retailers Target and Lowes, and Gillette Stadium/Patriot Place- home of the NFL New England Patriots and New England Revolution. 3 miles from Wrentham Village Premium Outlets, one of the largest destination retail outlets in Massachusetts.

details

Unit Name: Route 1 S/O Gillette Stadium/Patriot Place (F/N) Foxborough/Wrentham, MA

Size: 14'x48'

Weekly Gross Impressions: (18+) 102,313

Facing: South

Illumination: Yes

Latitude: 42.055613

Longitude: -71.298484



Advertising Company, Inc

1022 Morrissey Boulevard, Boston, MA 02122 Tell: (617)282-2100 Fax: 617-282-2040

MA#14 Route 1 @ Thurston Street (F/N)- Wrentham/Foxboro, MA



description

This right hand read is seen by traffic heading south on Route 1, and is approximately 1 mile north of the Route 1 junction and I-495 N/S On Ramps. Located at major-4 way stop light-(Route 1 and Thurston Street). Approximately 2 miles south of Gillette Stadium/Patriot Place-home of the NFL New England Patriots and New England Revolution. Heavy summer traffic due to its proximity to I-495. Heavy fall and winter traffic due to New England Patriots home games. Wrentham Village Premium Outlets less than 3 miles away

details

Unit Name:	Route 1 @ Thurston Street- (F/N)-Wrentham/Foxboro MA.
Size:	10'x30'
Weekly Gross Impressions:	((18+) 101,647
Facing:	North
Illumination:	Yes
Latitude:	42.05437
Longitude:	-71.299257



Advertising Company, Inc.

1022 Morrissey Boulevard, Boston, MA 02122 Tell: (617)282-2100 Fax: 617-282-2040

MA#15 Route 1 @ Thurston Street (F/S) - Wrentham/Foxboro, MA



description

This left hand read is located at a major 4-way stoplight; (Route 1 and Thurston Street.) Seen heading north on Route1-towards Gillette Stadium/Patriot Place. Located approximately 1 mile north of the I-495 Junction with Route 1. Also 2 miles south of Gillette Stadium/Patriot Place, as well as 3 miles north of Wrentham Village Premium Outlets, the largest premium mall outlet in all of Massachusetts.

details

Unit Name: Route 1 @ Thurston Street- (F/S)-Wrentham/Foxboro MA.
Size: 10'x30'
Weekly Gross Impressions: (18+) 71,509
Facing: South
Illumination: Yes
Latitude: 42.05437
Longitude: -71.299257



Advertising Company, Inc

1022 Morrissey Boulevard, Boston, MA 02122 Tell: (617)282-2100 Fax: 617-282-2040

MA#16 - Route 1 @ Gillette Stadium - Foxboro, MA PREMIUM DIGITAL DISPLAY



description

This premium digital display is located ¼ mile North of the main entrance to Gillette Stadium and Patriot Place, home of the NFL New England Patriots. Located at a long 4-way traffic signal on Route 1, between I-95 and I-495. Reach fans of The New England Patriots, New England Revolution, Concerts, Trade Shows and Patriot Place.

details

Unit Name:	Route 1 @ Gillette Stadium/Patriot Place
Size:	10x30 feet - Premier Digital Display
Weekly gross impressions:	(18+) 38,986 Per flip - 6 Maximum Advertisers. 10 second display per flip
Facing:	North
Illumination:	Yes
Latitude:	42.10191
Longitude:	-71.259708



Advertising Company, Inc

1022 Morrissey Boulevard, Boston, MA 02122 Tell: (617)282-2100 Fax: 617-282-2040

MA#17 - I-95 S/O Exit #9 (F/N) Foxboro/Sharon, MA. *14x48 Premier Digital



description

This extensive right hand read is seen heading south on I-95, and provides one of the longest unobstructed approaches in the Boston market; (close to one-third of a mile long). Located one half mile south of Exit #9 (Route 1-Foxboro). Targets Gillette Stadium/Patriot Place- home of the NFL New England Patriots and MLS New England Revolution, and numerous stadium concerts during summer. Approximately 5 miles north of I-495 north and south. Heavy summer/fall traffic with its close proximity to I-495. One of only two billboards on this entire stretch of I-95.

details

Unit Name: I-95, S/O Exit #9 (F/N)- Foxboro/Sharon, MA.

Size: 14'x48'

Weekly Gross Impressions: (18+) 254,805 per flip - 6 Maximum Advertisers. 10 second display per flip

Facing: North

Illumination: Yes

Latitude: 42.120644

Longitude: 71.231478



Advertising Company, Inc

1022 Morrissey Boulevard, Boston, MA 02122 Tell: (617)282-2100 Fax: 617-282-2040

MA#18 I-290 @ Shrewsbury Street (F/E) Worcester, MA



description

Extensive, long straight left hand approach. Board is seen heading West on I-290 - towards the Mass.Pike and Route 146. Board located in the heart of Downtown Worcester. Within a half-mile of the exitfor The DCU Center, and 1.1 miles from the Junction of I-290 and I-190.

details

Unit name:	I- 290 @ Shrewsbury Street, Worcester, MA
Size:	14x48 feet
Weekly Gross Impressions:	(18+) 396,070
Facing:	East
Illumination:	Yes
Latitude:	42.259156
Longitude:	-71.79267



Advertising Company, Inc

1022 Morrissey Boulevard, Boston, MA 02122 Tell: (617)28-2100 Fax: (617)282-2040

MA#19 I-290 @ Shrewsbury Street (F/W) Worcester, MA



description

Outstanding, long right hand read located in the heart of Downtown Worcester. Board is seen by traffic heading East on I-290, approximately 1.1 miles West of the Junction of I-290 and I-190.

Located just before the exit for Shrewsbury Street, one of the most culturally diverse streets in all of Worcester, and Exit #16, which leads to all points Downtown, the DCU Center, and Highland Avenue..

details

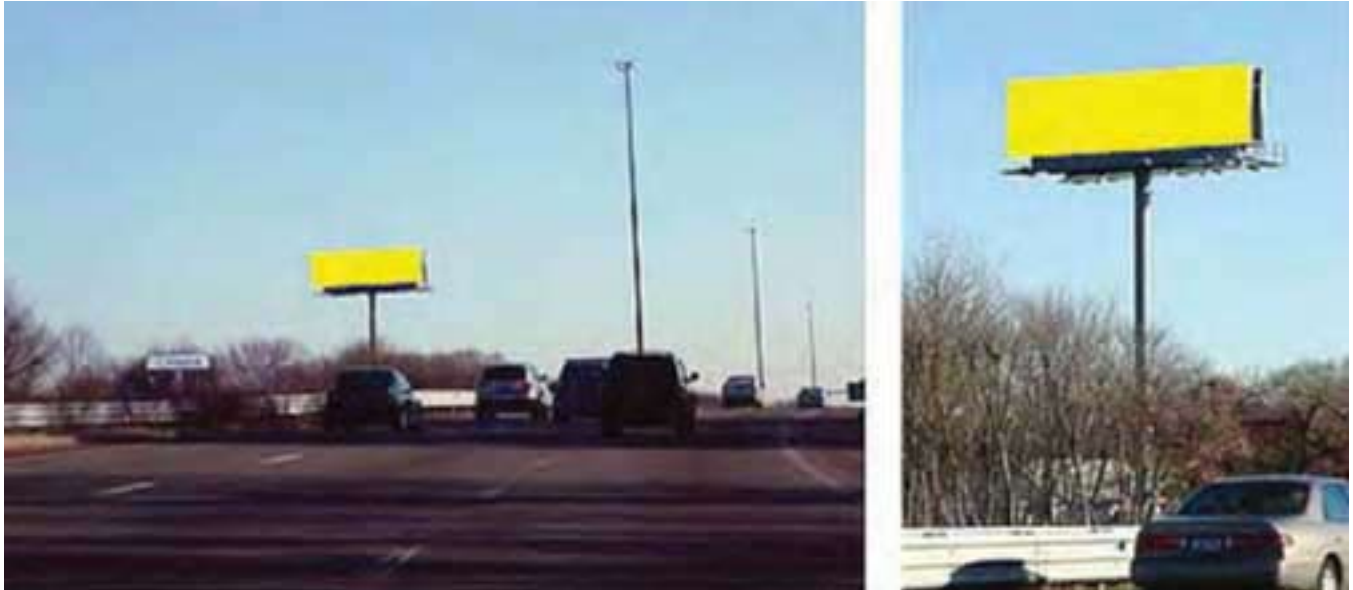
Unit name:	I-290 @ Shrewsbury Street, Worcester, MA
Size:	14x48 feet
Weekly Gross Impressions:	((18+) 507,143
Facing:	West
Illumination:	Yes
Latitude:	42.259156
Longitude:	-71.79267



Advertising Company, Inc.

1022 Morrissey Boulevard, Boston, MA 02122 Tell: (617)282-2100 Fax: 617-282-2040

MA # 20 I-95 S/O Newport Avenue (F/S) Providence, RI



description

Located just north of Rhode Island's capital city, this highly visible bulletin provides outstanding coverage to traffic heading out of downtown Providence and north on I-95, towards Gillette Stadium, (home of the New England Patriots), Wrentham Village Outlets. Also located directly across highway from Bristol Place Mall, and Minutes from Miraim and Rhode Island Hospitals.

details

Unit name:	I-95 S/O Newport Avenue
Size:	14x48 feet
Weekly Gross Impressions:	(18+) 386,298
Facing:	South
Illumination:	Yes
Latitude:	41.899563
Longitude:	--71.367332



Advertising Company, Inc.

1022 Morrissey Boulevard, Boston, MA 02122 Tell: (617)282-2100 Fax: 617-282-2040

MA # 2 1 I-95 S/O Newport Avenue (F/N) Providence, RI



description

Located just north of Rhode Island’s capital city, this highly visible bulletin provides outstanding coverage to traffic heading out of downtown Providence and north on I-95, towards Gillette Stadium, (home of the New England Patriots), Wrentham Village Outlets. Also located directly across highway from Bristol Place Mall, and Minutes from Miraim and Rhode Island Hospitals.

details

Unit name:	I-95 @ Newport Avenue, Providence, RI
Size:	14x48 feet
Weekly Gross Impressions:	((18+) 292,649
Facing:	South
Illumination:	Yes
Latitude:	41.899563
Longitude:	-71.367332



Advertising Company, Inc

1022 Morrissey Boulevard, Boston, MA 02122 Tell: (617)28-2100 Fax: (617)282-2040

MA#22 Route 33 (Memorial Drive) 0.3 miles S/O. I-90 on/off ramp (F/N) - Chicopee, MA



description

Memorial Drive (Route 33) is the most-heavily traveled local roadway in the Chicopee metro market. Billboard approximately one-third of a mile south of the Mass Pike on/off ramp. Route 33 has every major retailer located on it. Numerous auto dealerships in the area as well as many colleges and universities. Targets local and heavy summer seasonal traffic heading towards downtown Springfield. Long 1/4 mile unobstructed approach, located at e major stoplight and 4-way intersection.

details

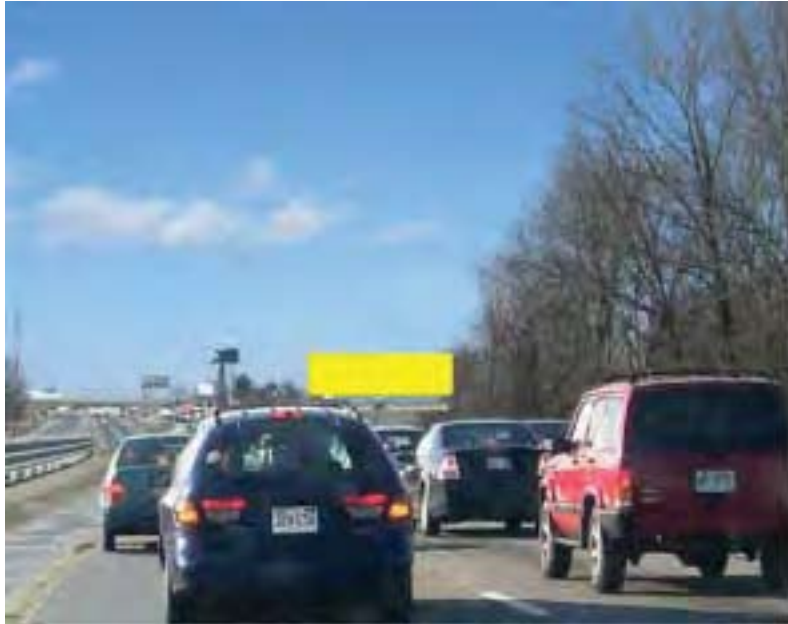
Unit name:	Route 33 (Memorial Drive). I-90 (Mass Pike) on/off ramp, Chicopee, MA
Size:	14x48 feet
Weekly Gross Impressions:	(18+) 87,956
Facing:	North
Illumination:	Yes
Latitude:	42.165666
Longitude:	-72.578933



Advertising Company, Inc

1022 Morrissey Boulevard, Boston, MA 02122 Tell: (617)28-2100 Fax: (617)282-2040

MA#23 Route 33 (Memorial Drive) 0.3 miles S/O. I-90 on/off ramp (F/S) - Chicopee, MA



description

Memorial Drive (Route 33) is the most-heavily traveled local roadway in the Chicopee metro market. Billboard approximately one-third of a mile south of the Mass Pike on/off ramp. Route 33 has every major retailer located on it. Numerous auto dealerships in the area as well as many colleges and universities. Targets local and heavy summer seasonal traffic heading towards Six Flags Amusement Park, and downtown Springfield.

details

Unit name:	Route 33 (Memorial Drive). I-90 (Mass Pike) on/off ramp, Chicopee, MA
Size:	14x48 feet
Weekly Gross Impressions:	(18+) 67,739
Facing:	South
Illumination:	Yes
Latitude:	42.165666
Longitude:	-72.578933



Advertising Company, Inc

1022 Morrissey Boulevard, Boston, MA 02122 Tell: (617)28-2100 Fax: (617)282-2040

MA#24 Mass Pike (I-90), 0.75 miles east of I-291 (F/E) - Chicopee, MA



description

Located 0.75 miles east from the junction of I-90 and I-291, and 2.5 miles from the junction of I-90 and I-91 "The Crossroads of New England", this unobstructed face enjoys a lengthy read extending nearly 0.5 miles. This face captures the attraction of all eastbound Mass Pike (I-90) traffic, and acts as a directional sign for any business located on I-291, a major roadway of retail chain stores, restaurants, and auto dealers. Since this location is east of "The Crossroads of New England" (I-90 and I-291), drivers viewing this billboard are headed to Springfield and eventually Hartford CT, home to Six Flags, The Big E. The Basketball Hall of Fame and Bradley Airport.

details

Unit name:	Mass Pike (I-90), Chicopee MA
Size:	14x48 feet
Weekly Gross Impressions:	(18+) 213,474
Facing:	East
Illumination:	Yes
Latitude:	42.161885
Longitude:	-72.578933



Advertising Company, Inc

1022 Morrissey Boulevard, Boston, MA 02122 Tell: (617)28-2100 Fax: (617)282-2040

MA#25 Mass Pike (I-90), 0.75 miles east of I-291(F/W) - Chicopee, MA



description

Located 0.75 miles east from the junction of I-90 and I-291, and 2.5 miles from the junction of I-90 and I-95 "The Crossroads of New England", this unobstructed face enjoys a lengthy read extending nearly 0.5 miles. This face captures the attraction of all eastbound Mass Pike (I-90) traffic, heading in the direction of the junction of I-90 and I-95. Since this location is east of "The Crossroads of New England" (I-90 and I-291), drivers viewing this billboard may have originated from Hartford CT, Springfield MA, or New York State. Local tourist destinations include The Big E, The Basketball Hall of Fame, and Six Flags also make for seasonal peaks in traffic and advertising.

details

Unit name:	Mass Pike (I-90), Chicopee MA
Size:	14x48 feet
Weekly Gross Impressions:	(18+) 266, 129
Facing:	West
Illumination:	Yes
Latitude:	42.161885
Longitude:	-72.578933